

Test Report

(EVERLIGHT ELECTRONICS CO., LTD.)

6-8 (NO. 6-8, ZHONGHUA RD., SHULIN DIST., NEW TAIPEI CITY 23860, TAIWAN)

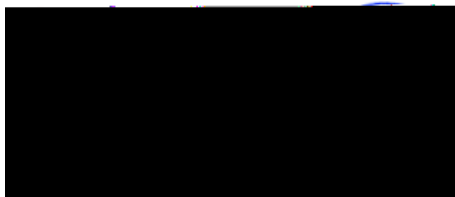
(The following sample(s) was/were submitted and identified by the applicant as)

| | |
|--------------------------------------|--|
| BASIC INFORMATION | |
| Type of Product | SMD C TYPE |
| Supplier Company Name | EVERLIGHT |
| Address | NO.6-8, ZHONGHUA RD., SHULIN DIST., NEW TAIPEI CITY 23860, TAIWAN |
| Tel / Fax / Email | TEL:886-2685-6688 |
| | FAX:886-2685-6699 |
| | E-MAIL: lindawang@everlight.com |
| Contact Person | LI LING WANG |
| EVERLIGHT REPORT NO | SMD C TYPE MOLDING SERIES Sampling Product : 67-31A/GHC-YV1W2EZ3/2T-SGS-11-Jan-2024 |
| PRODUCT INFORMATION | |
| Product/component Sample description | PLCC with Lens |
| Quantity (numbers or weight) | 0.0288 g |
| EVERLIGHT P/N | SMD C TYPE MOLDING SERIES Sampling Product : 67-31A/GHC-YV1W2EZ3/2T |
| Product Lot No | T231205K18Q428 |
| Country of Origin | TAIWAN |
| TEST INFORMATION | |
| Sample preparation | CUTTING |
| Test Method | RoHS: IEC 62321, Halogen: BS EN 14582 |
| MDL | Cd, Pb, Hg: 2 mg/kg, PBBs/PBDEs: 5 mg/kg, Halogen: 50 mg/kg |

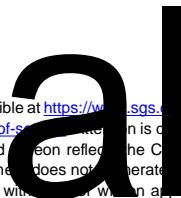
(Sample Submitted By) : (EVERLIGHT ELECTRONICS CO., LTD.)

(Sample Receiving Date) : 28-Dec-2023
 (Testing Period) : 28-Dec-2023 to 11-Jan-2024

(Test Results) : (Please refer to following pages).



PIN CODE: 44F85869





(No.): ETR23C05763

(Date): 11-Jan-2024

(Page): 2 of 24

Test Report

(EVERLIGHT ELECTRONICS CO., LTD.)

6-8 (NO. 6-8, ZHONGHUA RD., SHULIN DIST., NEW TAIPEI CITY 23860, TAIWAN)

(Test Requested) : (1) RoHS 2011/65/EU Annex II (EU) 2015/863
 , DBP, BBP, DEHP, DIBP (As specified by client, with reference to RoHS 2011/65/EU Annex II and amending Directive (EU) 2015/863 to determine Cadmium, Lead, Mercury, Cr(VI), PBBs, PBDEs, DBP, BBP, DEHP, DIBP contents in the submitted sample(s).)

(2) PAHs (As specified by client, to test PAHs and other item(s).)

(Conclusion) : (1) , DBP, BBP, DEHP, DIBP RoHS 2011/65/EU Annex II (EU) 2015/863 (Based on the performed tests on submitted sample(s), the test results of Cadmium, Lead, Mercury, Cr(VI), PBBs, PBDEs, DBP, BBP, DEHP, DIBP comply with the limits as set by RoHS Directive (EU) 2015/863 amending Annex II to Directive 2011/65/EU.)

(2) (AfPS) GS PAHs 3 (Based upon the performed tests on the submitted sample(s), the test results of PAHs (15 items) comply with the limits of PAHs requirement (Category 3) Other consumer products as set by German Committee on Product Safety (AfPS) GS PAHs.)

(Test Part Description)

- No.1 : (BODY)
- No.2 : (PLATING LAYER OF SILVER COLORED METAL PIN)
- No.3 : (BASE MATERIAL OF SILVER COLORED METAL PIN)
- No.4 : () (SILVER COLORED METAL PIN (INCLUDING THE PLATING LAYER))

(Test Results)

| (Test Items) | (Method) | (Unit) | MDL | (Result) | | | (Limit) |
|---------------------|---|--------|-----|----------|------|------|---------|
| | | | | No.1 | No.2 | No.3 | |
| (Cd) (Cadmium (Cd)) | IEC 62321-5: 2013 | mg/kg | 2 | n.d. | --- | --- | 100 |
| (Pb) (Lead (Pb)) | (With reference to IEC 62321-5: 2013, analysis was performed by ICP-OES.) | mg/kg | 2 | 5.58 | --- | --- | 1000 |

Test Report

(EVERLIGHT ELECTRONICS CO., LTD.)

6-8 (NO. 6-8, ZHONGHUA RD., SHULIN DIST., NEW TAIPEI CITY 23860, TAIWAN)

| (Test Items) | (Method) | (Unit) | MDL | (Result) | | | (Limit) |
|----------------------------|---|--------|-----|----------|------|------|---------|
| | | | | No.1 | No.2 | No.3 | |
| (Hw) | IEC 62321-4: 2013+ AMD1: 2017 (With reference to IEC 62321-4: 2013+ AMD1: 2017, analysis was performed by ICP-OES.) | mg/kg | 2 | n.d. | --- | --- | 1000 |
| | IEC 62321-7-2: 2017 (With reference to IEC 62321-7-2: 2017, analysis was performed by UV-VIS.) | mg/kg | 8 | n.d. | --- | --- | 1000 |
| (Monobromobiphenyl) | | mg/kg | 5 | n.d. | --- | --- | - |
| (Dibromobiphenyl) | | mg/kg | 5 | n.d. | --- | --- | - |
| (Tribromobiphenyl) | | mg/kg | 5 | n.d. | --- | --- | - |
| | | mg/kg | 5 | n.d. | --- | --- | - |
| (Pentabromobiphenyl) | | mg/kg | 5 | n.d. | --- | --- | - |
| | | mg/kg | 5 | n.d. | --- | --- | - |
| | | mg/kg | 5 | n.d. | --- | --- | - |
| | | mg/kg | 5 | n.d. | --- | --- | - |
| | | mg/kg | 5 | n.d. | --- | --- | - |
| | IEC 62321-6: 2015 | mg/kg | 5 | n.d. | --- | --- | - |
| | / | mg/kg | 5 | n.d. | --- | --- | - |
| | (With reference to IEC 62321-6: 2015, analysis was performed by GC/MS.) | mg/kg | - | n.d. | --- | --- | 1000 |
| (Monobromodiphenyl ether) | | mg/kg | 5 | n.d. | --- | --- | - |
| (Dibromodiphenyl ether) | | mg/kg | 5 | n.d. | --- | --- | - |
| (Tribromodiphenyl ether) | | mg/kg | 5 | n.d. | --- | --- | - |
| (Tetrabromodiphenyl ether) | | mg/kg | 5 | n.d. | --- | --- | - |
| (Pentabromodiphenyl ether) | | mg/kg | 5 | n.d. | --- | --- | - |
| (Hexabromodiphenyl ether) | | mg/kg | 5 | n.d. | --- | --- | - |
| | | mg/kg | 5 | n.d. | --- | --- | - |
| (Octabromodiphenyl ether) | | mg/kg | 5 | n.d. | --- | --- | - |
| (Nonabromodiphenyl ether) | | mg/kg | 5 | n.d. | --- | --- | - |
| | | mg/kg | 5 | n.d. | --- | --- | - |
| (Sum of PBDEs) | | mg/kg | - | n.d. | --- | --- | 1000 |



Test Report

(Page): 7 of 24

This document is issued by the Company subject to its General Conditions of Service printed overleaf, available on request or accessible at <https://www.sgs.com.tw/terms-of-service> and, for electronic format documents, subject to Terms and Conditions for Electronic Documents at <https://www.sgs.com.tw/terms-of-service>. The information is given to the limitation of liability, indemnification and jurisdiction issues defined therein. Any holder of this document is advised that information contained herein is based on the Company's findings at the time of its intervention only and within the limits of client's instruction, if any. The Company's sole responsibility is to its Client and this document does not liberate parties to a transaction from exercising all their rights and obligations under the transaction documents. This document cannot be reproduced, except in full, without the prior written approval of

al

Test Report

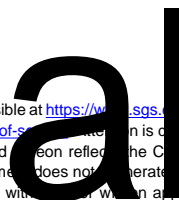
(EVERLIGHT ELECTRONICS CO., LTD.)

6-8 (NO. 6-8, ZHONGHUA RD., SHULIN DIST., NEW TAIPEI CITY 23860, TAIWAN)

| (Test Items) | (Method) | (Unit) | MDL | (Result) | (Limit) |
|--|--|--------|-----|----------|---------|
| | | | | No.4 | |
| (Be) (Beryllium (Be)) (CAS No.: 7440-41-7) | US EPA 3050B: 1996 (With reference to US EPA 3050B: 1996, analysis was performed by ICP-OES.) | mg/kg | 2 | n.d. | - |

(Note)

1. mg/kg = ppm 0.1wt% = 0.1% = 1000ppm
2. MDL = Method Detection Limit ()
3. n.d. = Not Detected (); MDL / Less than MDL
4. "-" = Not Regulated ()
5. "---" = Not Conducted ()
6. (#2) =
 - a. 0.13 µg/cm² . / The sample is positive for Cr(VI) if the Cr(VI) concentration is greater than 0.13 µg/cm². The sample coating is considered to contain Cr(VI).
 - b. n.d. (0.10 µg/cm²) . / The sample is negative for Cr(VI) if Cr(VI) is n.d. (concentration less than 0.10 µg/cm²). The coating is considered a non-Cr(VI) based coating
 - c. 0.10 0.13 µg/cm² . / The result between 0.10 µg/cm² and 0.13 µg/cm² is considered to be inconclusive - unavoidable coating variations may influence the determination.
7. ILAC-G8:09/2019 (w=0)
 (Unless otherwise stated, the decision rule for conformity reporting is based on Binary Statement for Simple Acceptance Rule (w=0) stated in ILAC-G8:09/2019. According to this rule, the judgement of conformity is based on the comparing test results with limits.)



Test Report

(EVERLIGHT ELECTRONICS CO., LTD.)

6-8 (NO. 6-8, ZHONGHUA RD., SHULIN DIST., NEW TAIPEI CITY 23860, TAIWAN)

PAHs Remark

(A fPS): GS PAHs

AfPS (German commission for Product Safety): GS PAHs requirements

| | 1 (Category 1) | 2 (Category 2) | 3 (Category 3) |
|-------------|--|--|----------------|
| (Parameter) | <p>(30) 2009/48/EC intended to be placed in the mouth, or materials in toys (Directive 2009/48/EC) or articles for children up to 3 years of age with intended long-term skin contact (> 30 seconds))</p> | <p>1 30 () (Materials that are not in Category 1, with intended or foreseeable long-term skin contact (> 30 seconds) or short-</p> | |

Test Report

(EVERLIGHT ELECTRONICS CO., LTD.)

6-8 (NO. 6-8, ZHONGHUA RD., SHULIN DIST., NEW TAIPEI CITY 23860, TAIWAN)

| | | |
|--|---|------------|
| | (POSF) | 307-35-7 |
| | Perfluorooctane sulfonyl fluoride (POSF) | |
| | (PFOS-Mg) | 91036-71-4 |
| | Perfluorooctanesulfonic acid, magnesium salt (PFOS-Mg) | |
| | (PFOS-Na) | 4021-47-0 |
| | Perfluorooctanesulfonic acid, sodium salt (PFOS-Na) | |
| | Piperidine | |
| | | 335-93-3 |
| PFOA, & (PFOA, its salts & derivatives) | (PFOA-F) | 335-66-0 |
| | Perfluorooctanoyl fluoride (PFOA-F) | |
| | (APFO) | 3825-26-1 |
| | Ammonium pentadecafluorooctanoate (APFO) | |
| | (PFOA-Li) | 17125-58-5 |
| | Lithium perfluorooctanoate (PFOA-Li) | |

Test Report

(EVERLIGHT ELECTRONICS CO., LTD.)

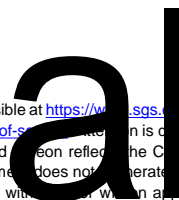
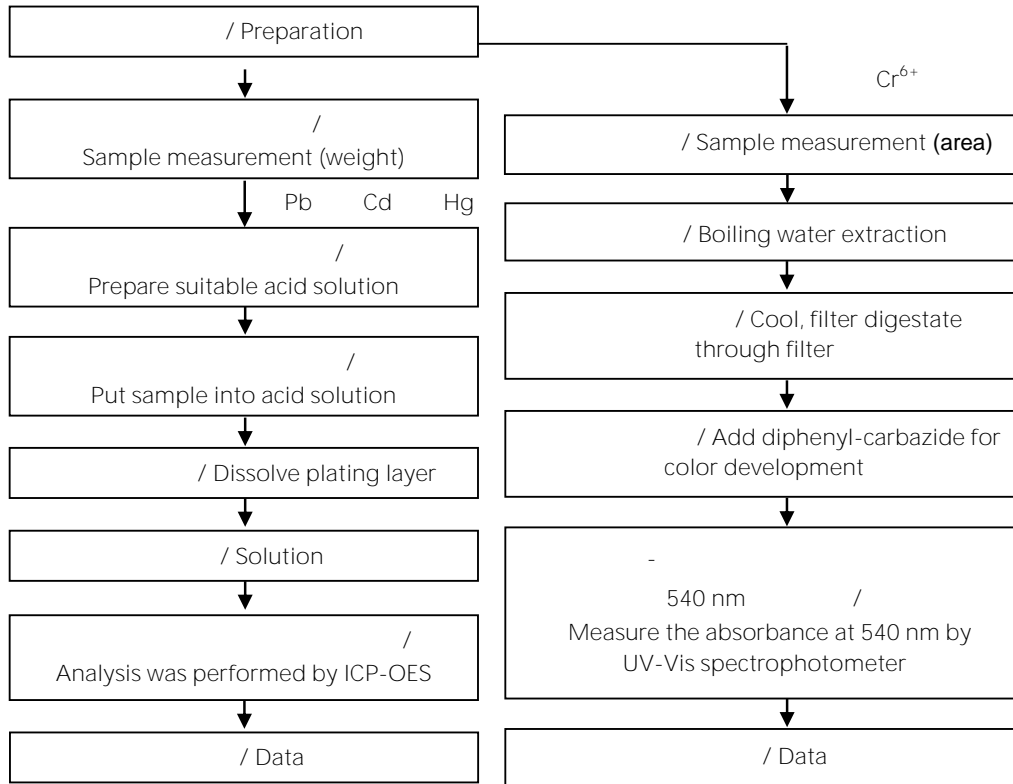
6-8 (NO. 6-8, ZHONGHUA RD., SHULIN DIST., NEW TAIPEI CITY 23860, TAIWAN)

/ Flow chart of stripping method for metal analysis

/ The plating layer

of samples were dissolved totally by pre-conditioning method according to below flow chart.

Cr⁶⁺ test method excluded

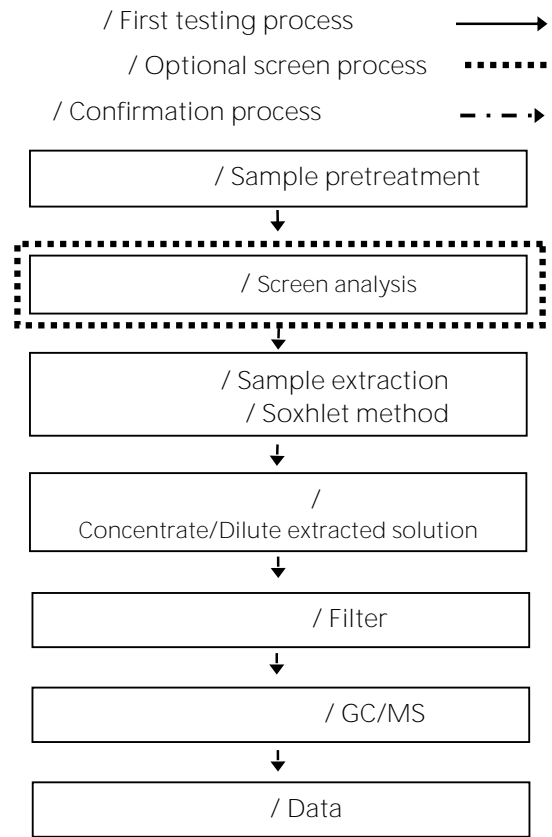


Test Report

(EVERLIGHT ELECTRONICS CO., LTD.)

6-8 (NO. 6-8, ZHONGHUA RD., SHULIN DIST., NEW TAIPEI CITY 23860, TAIWAN)

/ Analytical flow chart - PBBs/PBDEs



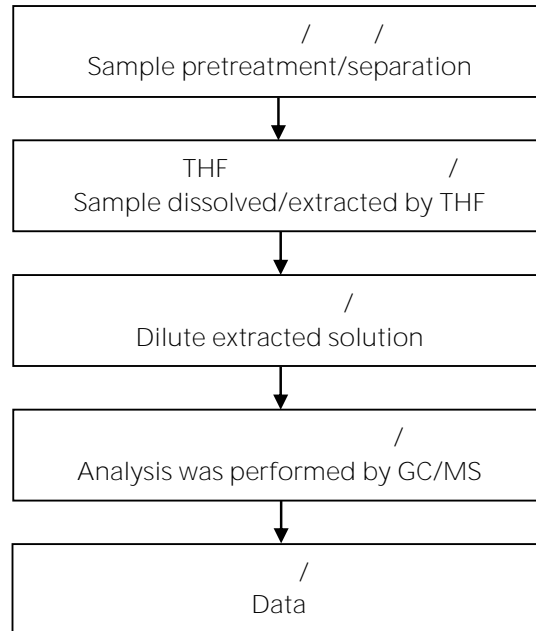
Test Report

(EVERLIGHT ELECTRONICS CO., LTD.)

6-8 (NO. 6-8, ZHONGHUA RD., SHULIN DIST., NEW TAIPEI CITY 23860, TAIWAN)

/ Analytical flow chart - Phthalate

/Test method: IEC 62321-8



al

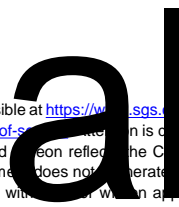
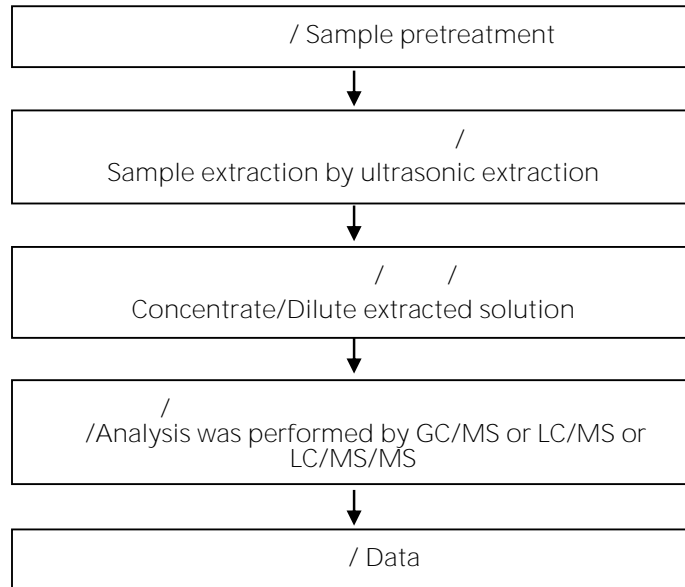
al

Test Report

(EVERLIGHT ELECTRONICS CO., LTD.)

6-8 (NO. 6-8, ZHONGHUA RD., SHULIN DIST., NEW TAIPEI CITY 23860, TAIWAN)

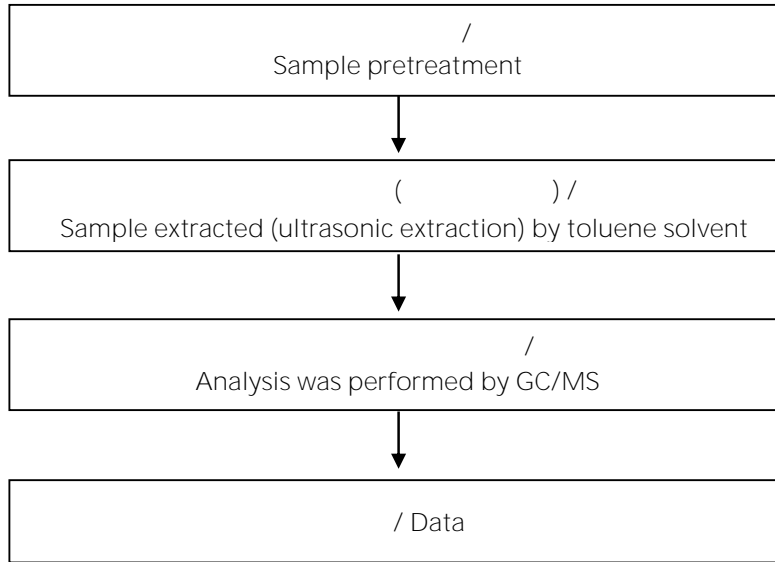
(/ /) / Analytical flow chart - PFAS (including PFOA/PFOS/its related compound, etc.)



Test Report

(EVERLIGHT ELECTRONICS CO., LTD.)
6-8 (NO. 6-8, ZHONGHUA RD., SHULIN DIST., NEW TAIPEI CITY 23860, TAIWAN)

Analytical flow chart - PAHs (Polycyclic Aromatic Hydrocarbons)



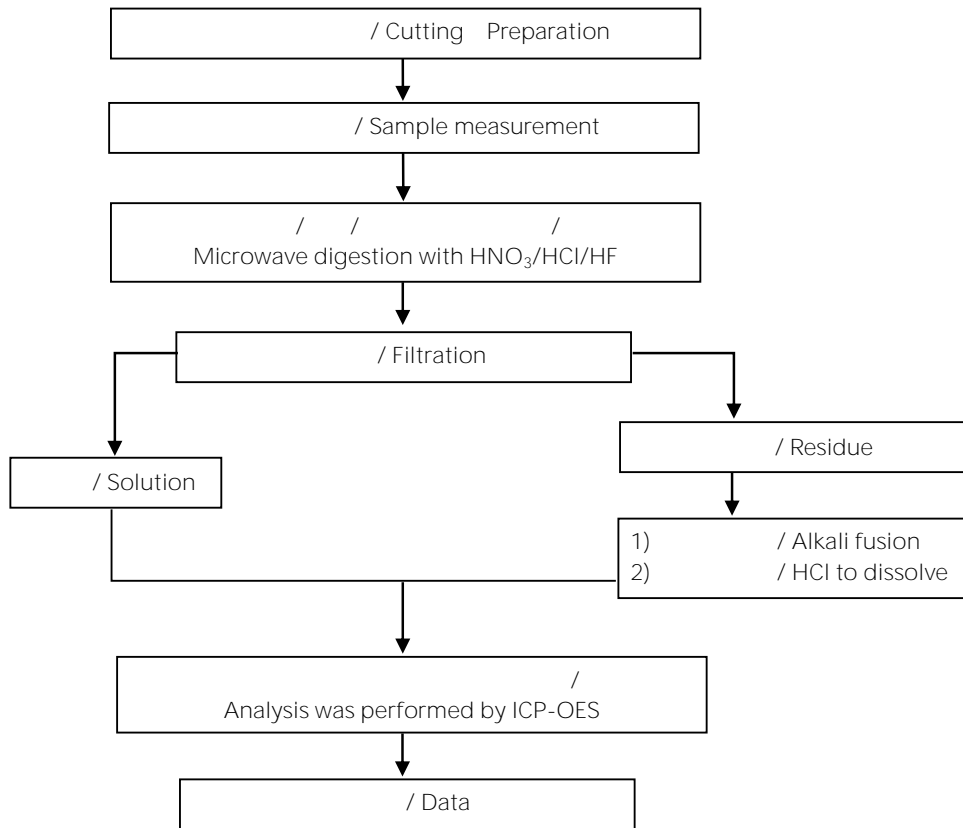
Test Report

(EVERLIGHT ELECTRONICS CO., LTD.)
6-8 (NO. 6-8, ZHONGHUA RD., SHULIN DIST., NEW TAIPEI CITY 23860, TAIWAN)

() / Analytical flow chart of elements (Heavy metal included)

These samples were dissolved totally by pre-conditioning method according to below flow chart.

/Reference method US EPA 3051A US EPA 3052



* US EPA 3051A

/ US EPA 3051A method does not add HF.

Test Report

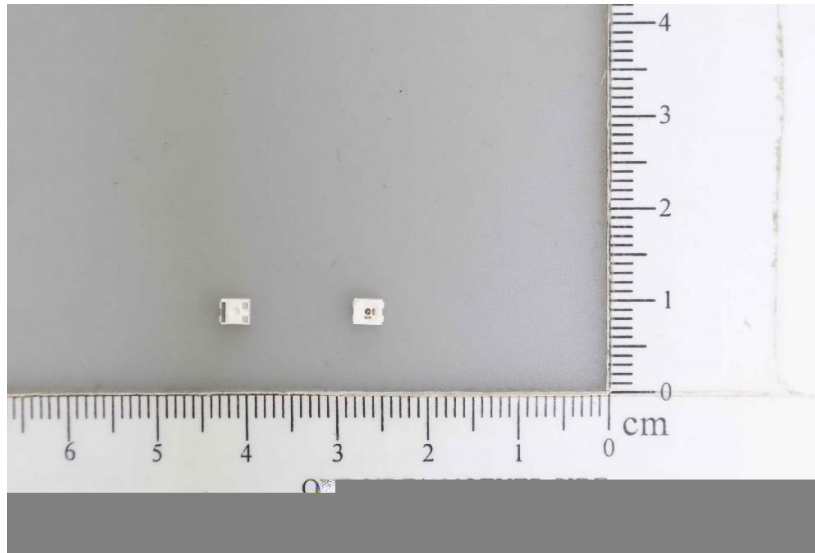
(EVERLIGHT ELECTRONICS CO., LTD.)

6-8 (NO. 6-8, ZHONGHUA RD., SHULIN DIST., NEW TAIPEI CITY 23860, TAIWAN)

* / *

(The tested sample / part is marked by an arrow if it's shown on the photo.)

ETR23C05763



Test Report

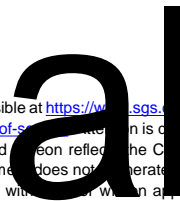
(EVERLIGHT ELECTRONICS CO., LTD.)

6-8 (NO. 6-8, ZHONGHUA RD., SHULIN DIST., NEW TAIPEI CITY 23860, TAIWAN)

ETR23C05763 NO. 2



ETR



Test Report

(EVERLIGHT ELECTRONICS CO., LTD.)

6-8 (NO. 6-8, ZHONGHUA RD., SHULIN DIST., NEW TAIPEI CITY 23860, TAIWAN)

ETR23C05763 NO. 4



** (End of Report) **