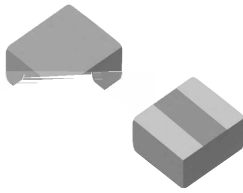


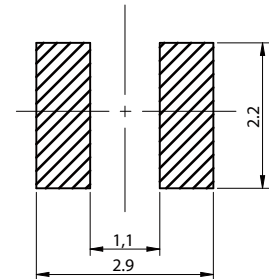
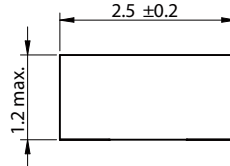
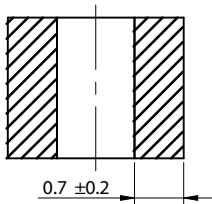


SPM Series



CHARACTERISTICS

- Large current, Low DC-resistance, High efficiency by magnetic metal powder
- Low acoustic noise and low leakage flux noise by shielded construction
- Operating temperature: -40°C ~ 125°C
- Quantity: 3000 pcs/reel
- AEC-Q200 qualified



Part No	Inductance (μH)	Tolerance	Temperature Rise Current Max. (A)	Saturation Current Max. (A)	DCR Max. (mΩ)	DCR Typ. (mΩ)
SPM2512-R47N	0.47	30%	3.40	6.70	40	30
SPM2512-R56N	0.56	30%	3.10	6.40	49	37
SPM2512-R68N	0.68	30%	2.90	6.10	59	45
SPM2512-1R0M	1.0	20%	2.80	5.70	60	49
	1.2	20%	2.40	5.30	80	
	1.5	20%	2.20	4.20	99	
	2.2	20%	1.60	3.40	141	123
SPM2512-3R3M	3.3	20%	1.20	3.00	260	
SPM2512-4R7M	4.7	20%	1.00	2.10	345	300
	5.6	20%	0.90	1.90	465	405
	6.8	20%	0.80	1.80	640	560
	8.2	20%	0.75	1.70	720	630
SPM2512-100M	10	20%	0.70	1.50	780	680

Temperature rise current: the actual value of DC current when the temperature rise is $\leq 40^{\circ}\text{C}$
 Saturation Current that will cause initial inductance to drop approximately 30%

