

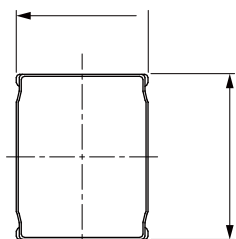
NRSM Series

Wire Wound SMD Power Inductor

Size 252010

Dimensions: [mm]

Land Pattern: [mm]



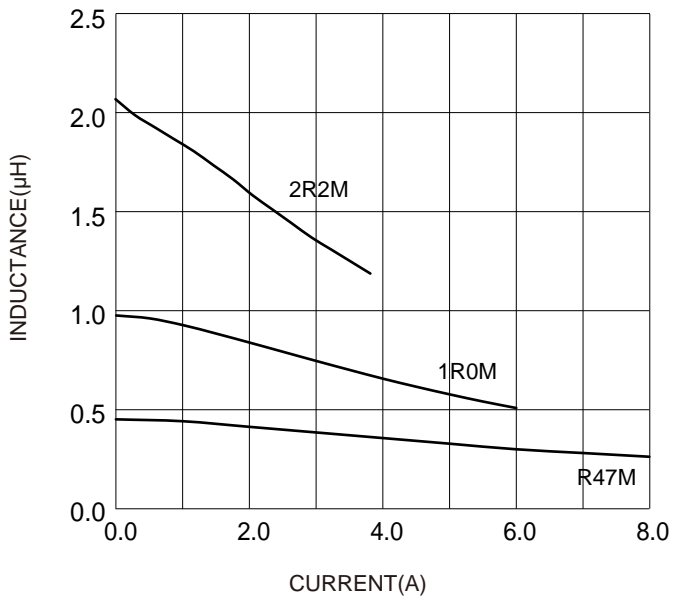
Electrical Properties:

Saturation Current that will cause initial inductance to drop approximately 30%

Temperature Rise Current: For max value, $T < 40^{\circ}\text{C}$; For Typ value, T is approximate 40°C . 2.0 ± 1 / 22.5 ± 1.2

Typical Electrical Characteristics:

Inductance VS. Current Characteristics:



Temperature Rise VS. Current Characteristics:

